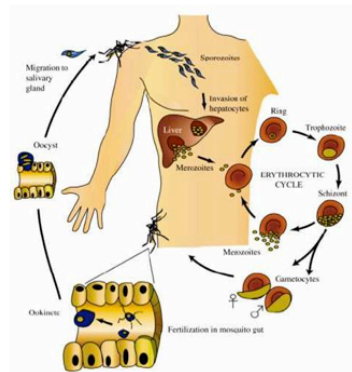


Basic Malaria Prevention

William R Brieger
Professor, Johns Hopkins University
Bloomberg School of Public Health,
Senior Malaria Specialist, Jhpiego
e-mail: wrbrieger1@jhu.edu

Where to Intervene

- **Vectors:** Preventing malaria-carrying Anopheles mosquitoes from biting people
- **Parasites:** Preventing malaria infections in people from developing or being transmitted back to mosquitoes



Vector Management

- Insecticide treated nets (ITNs) including long-lasting insecticide treated nets (LLINs).
- Indoor residual spraying (IRS) in areas of appropriate epidemiological and ecological characteristics.
- Mosquito larval source management (LSM) in areas with accessible breeding sites.

Using Malaria Medicines



- Intermittent preventive treatment of pregnant women (IPTp) with (as of 2013) sulfadoxine-pyrimethamine (SP)
- Seasonal chemoprevention of malaria (SCM) for children in areas with marked seasonal transmission
- Appropriate case management with parasitological testing and artemisinin-based combination therapy (ACT) will block transmission to mosquitoes

Insecticide Treated Nets



Indoor Residual Spraying



Larval Source Management



The left photograph shows two individuals wading in a body of water. The person in the foreground is wearing a yellow life vest and a purple cap, and is using a long-handled net to collect larvae. The person in the background is wearing an orange shirt and a white cap, and is also using a long-handled net. The right photograph shows a person wearing a green hat and a light blue shirt, using a long-handled net to collect larvae from a shallow, muddy area. The person is holding a green bucket. In the background, another person is visible, and there are trees and a fence.





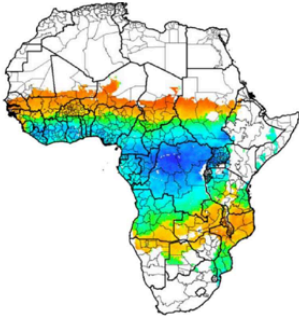
JOHNS HOPKINS
UNIVERSITY

Intermittent Preventive Treatment in Pregnancy

The left photograph shows a pregnant woman wearing a white polo shirt with the 'LIFEAN' logo, being administered a tablet by a healthcare worker in a blue shirt. The right photograph shows a hand holding a completed IPTp card with handwritten details of the treatment schedule.

Johns Hopkins University

Seasonal Chemoprevention in Children



JOHNS HOPKINS
UNIVERSITY

Appropriate Malaria Case Management Diagnostics



Appropriate Malaria Case Management with ACTs



Ideally use a Mix of Interventions



Key References and Resources from the World Health Organization



- ITNs: <http://www.who.int/malaria/publications/atoz/itnspospaperfinal/en/index.html>
- IRS: <http://www.who.int/malaria/publications/atoz/9789241505123/en/index.html>
- LSM: <http://www.who.int/malaria/publications/atoz/9789241505604/en/index.html>
- IPTp: http://www.who.int/malaria/areas/preventive_therapies/pregnancy/en/index.html
- SCM: http://www.who.int/malaria/areas/preventive_therapies/children/en/index.html
- ACTs: <http://www.who.int/malaria/publications/atoz/9789241547925/en/index.html>

e-mail: wrbrige1@jhu.edu



WorldMEDSchool
GLOBAL EDUCATION

Basic Malaria Prevention

